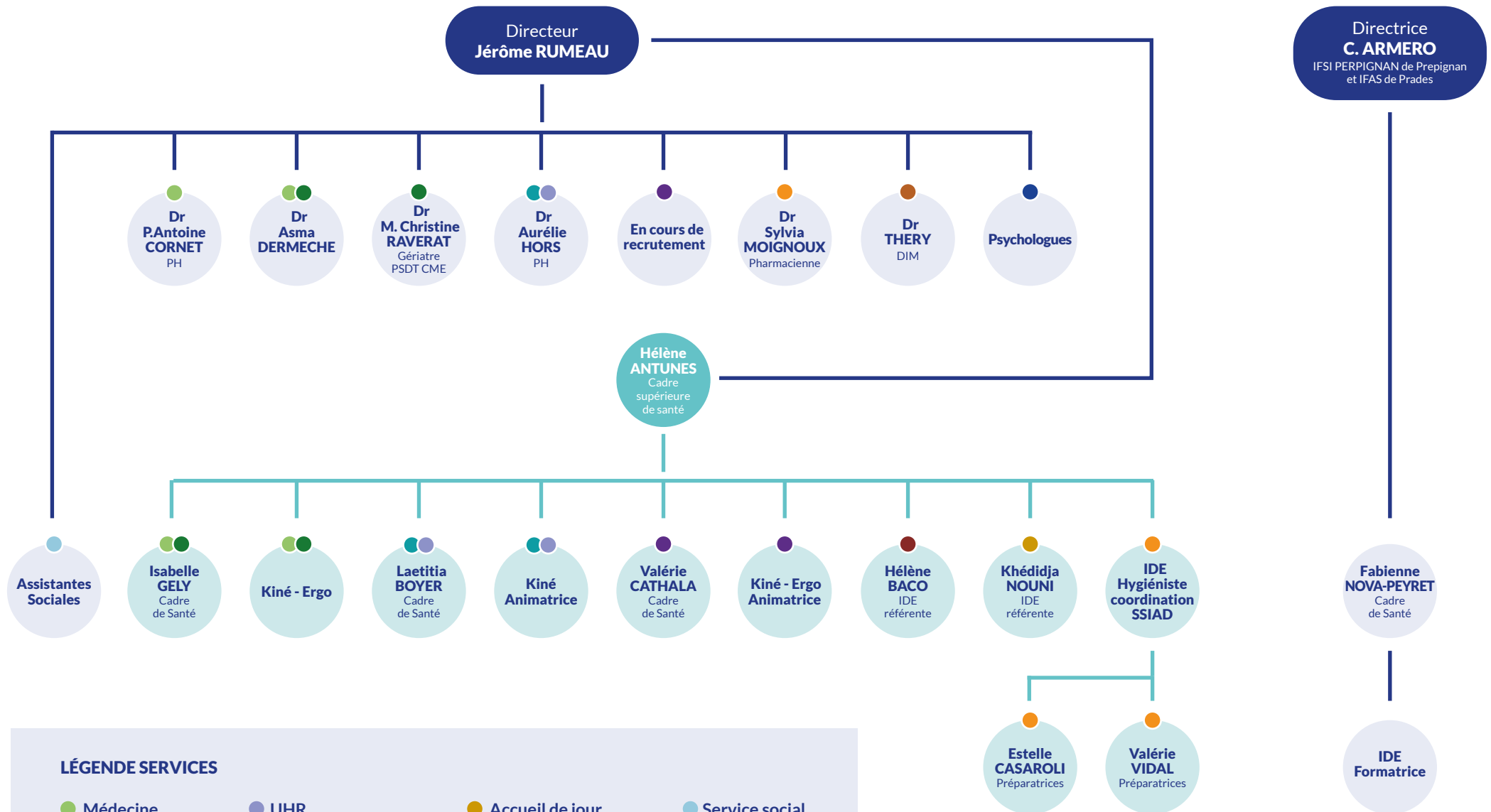


Hôpital de Prades - Organigramme services de soins



LÉGENDE SERVICES

- | | | | |
|---|--|---|---|
| ● Médecine | ● UHR | ● Accueil de jour | ● Service social |
| ● SSR | ● EHPAD + PASA | ● Pharmacie | ● Psychologues |
| ● USLD | ● SSIAD | ● DIM | |